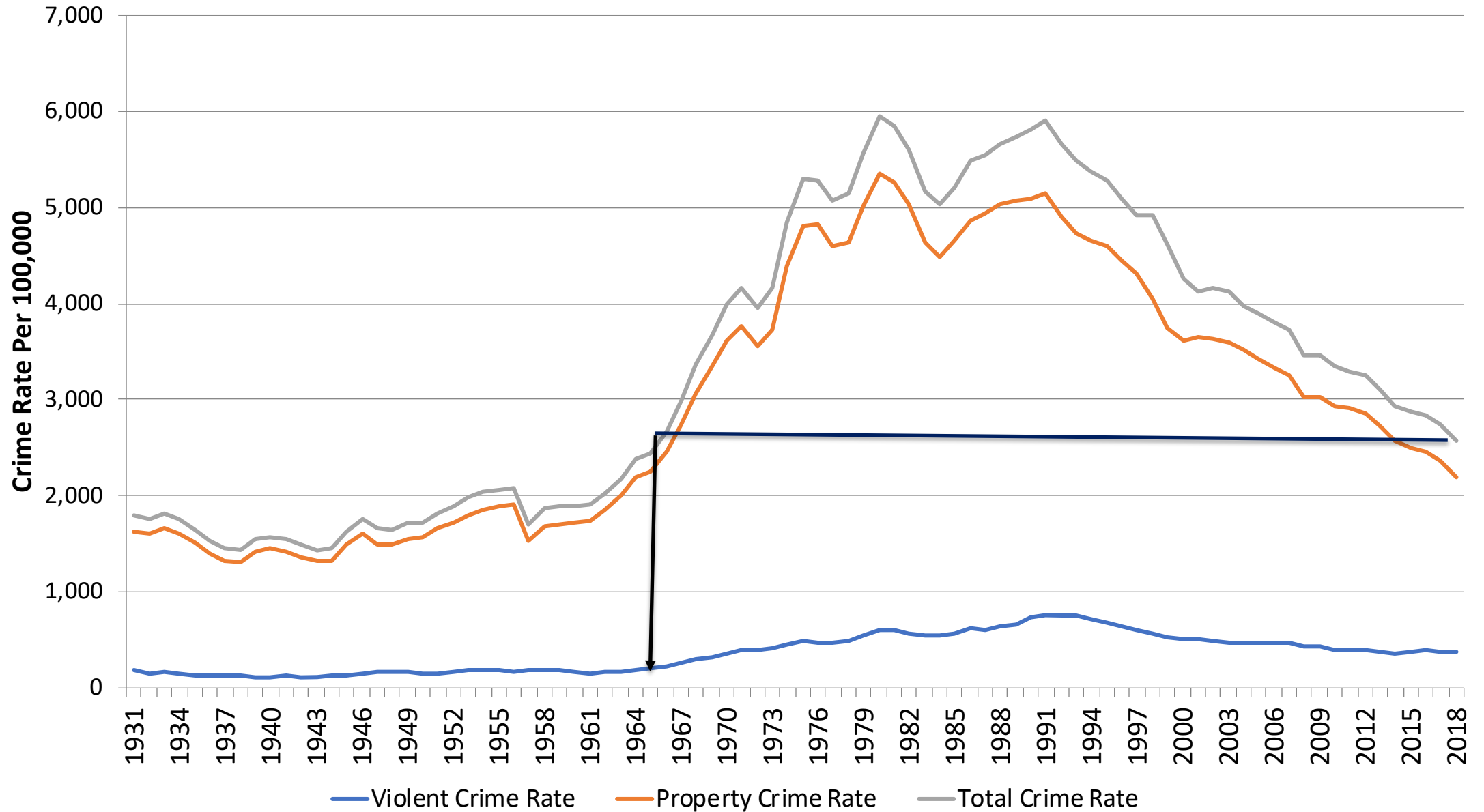


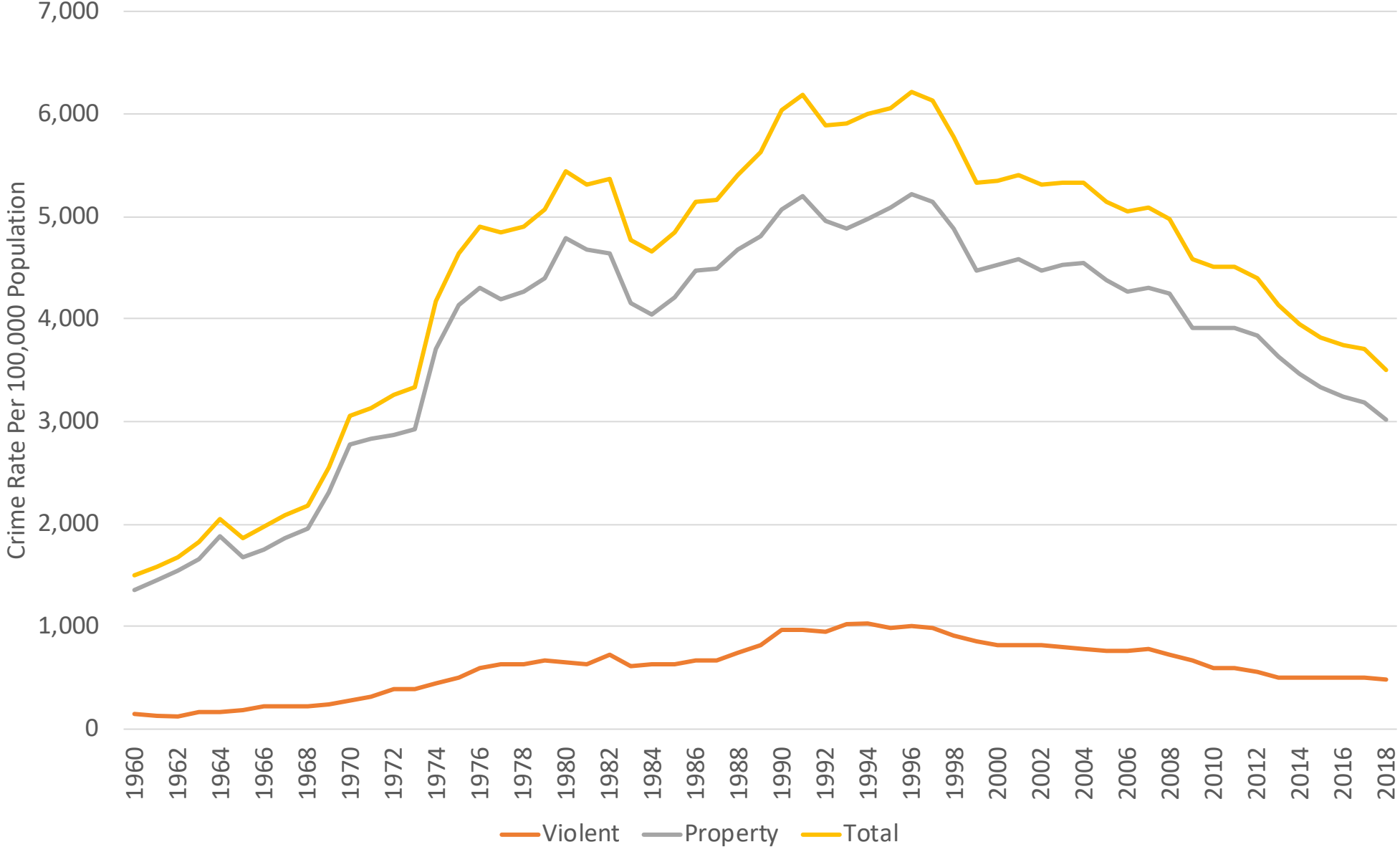
Crime and Punishment in the Palmetto State

James Austin, Ph.D.

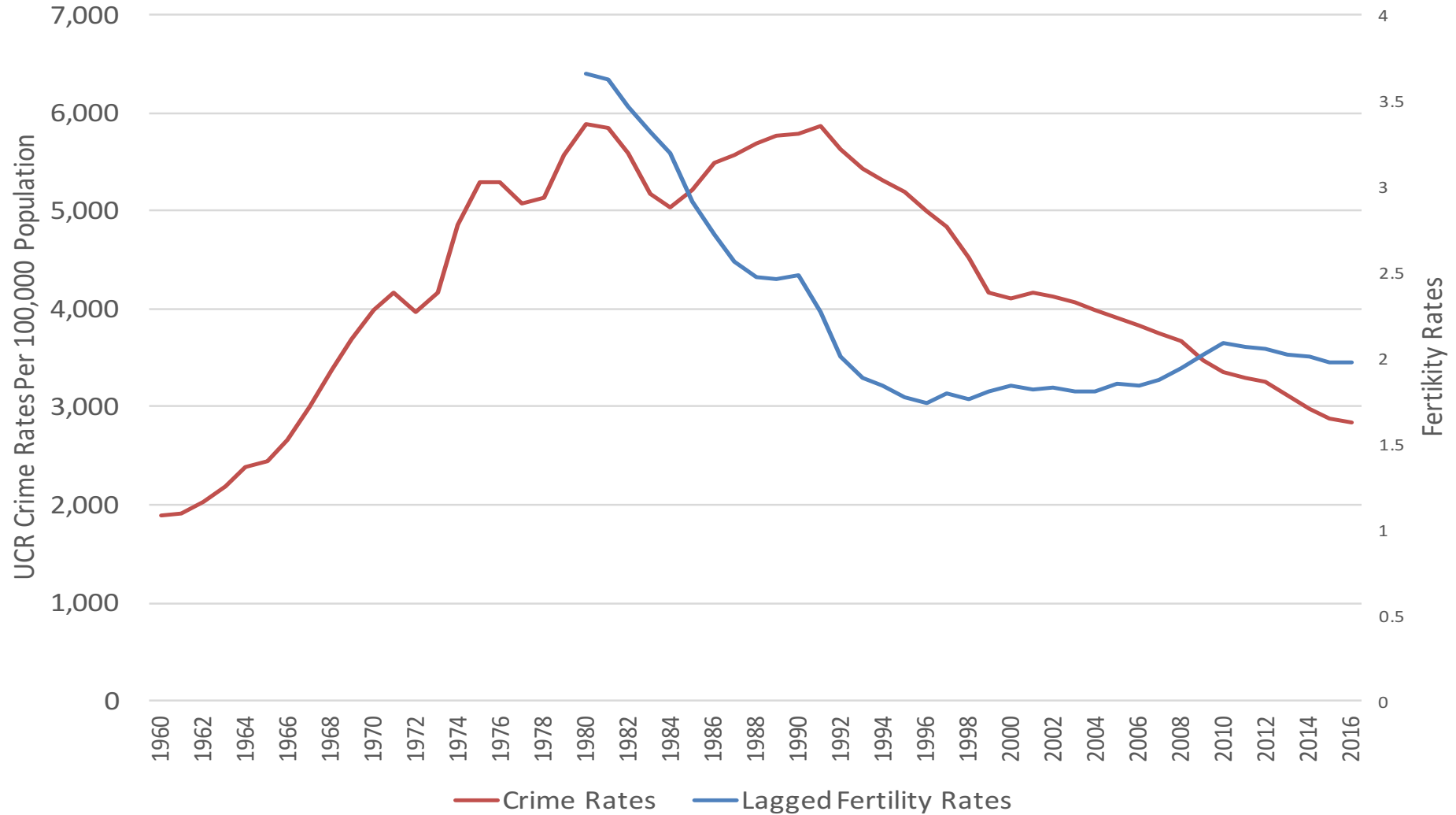
Figure 1. UCR Crime Rates Per 100,000 Population 1931-2018



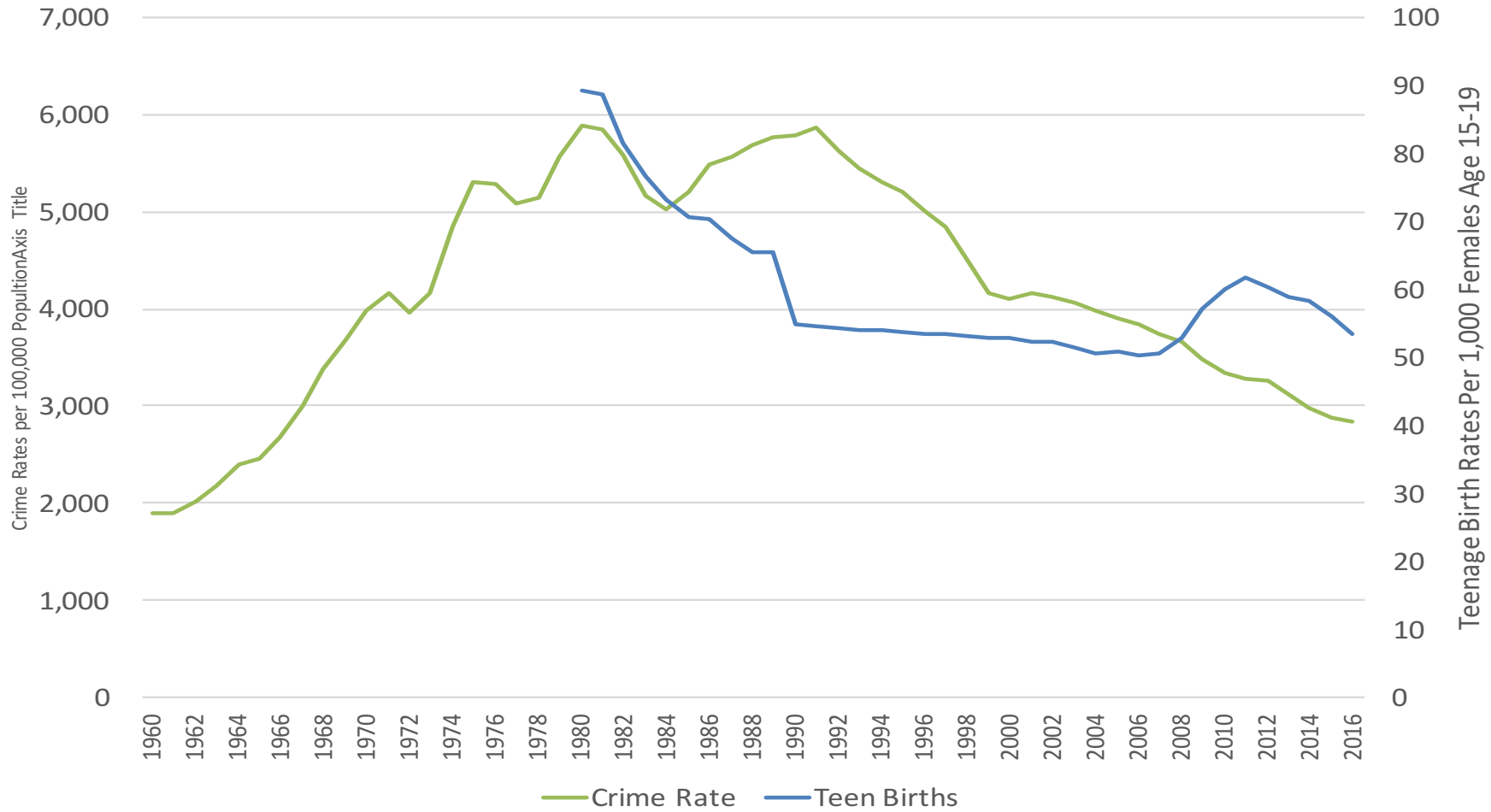
South Carolina Crime Rates 1960-2018



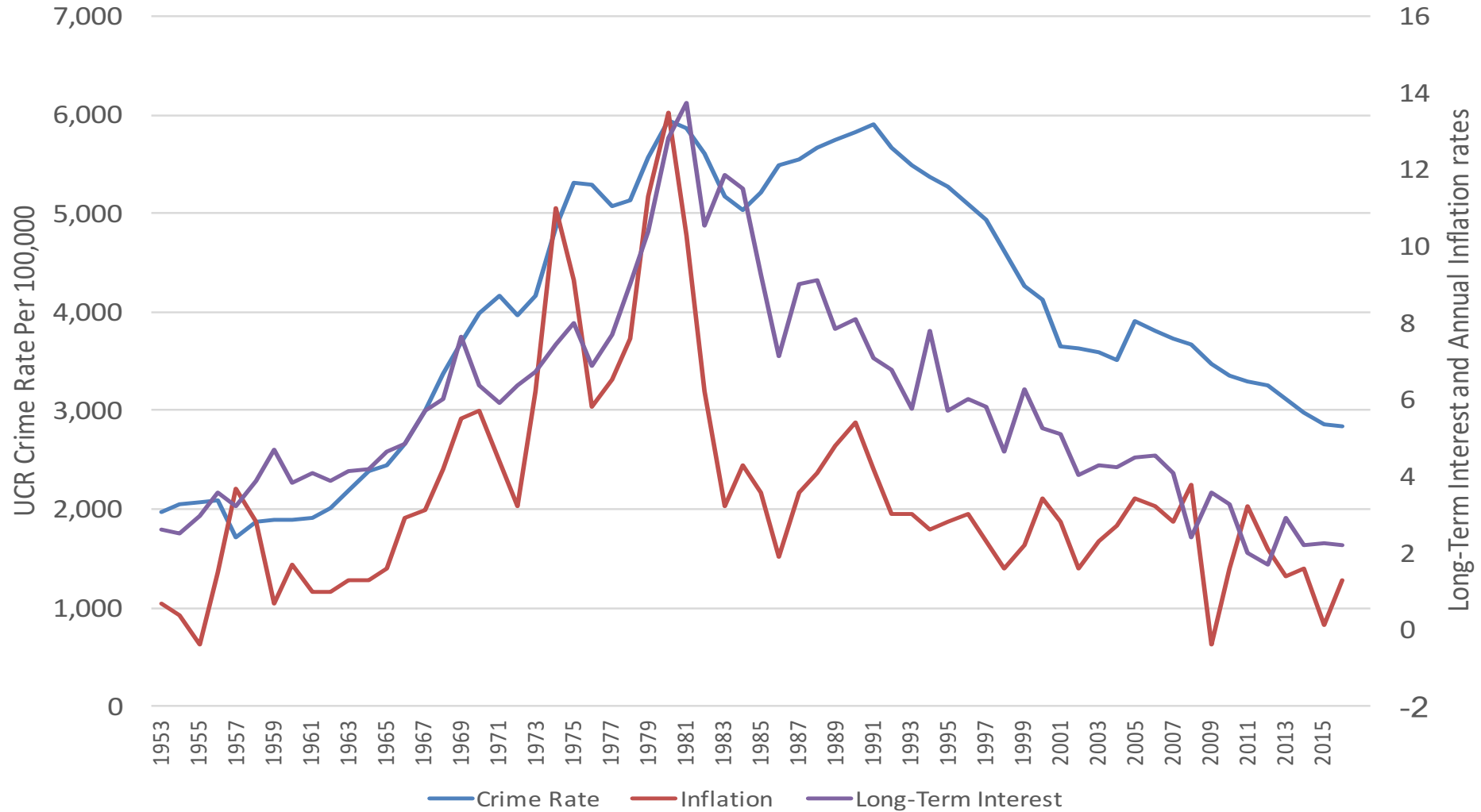
**Figure 4. 20 Year Lagged Fertility and Crime Rates
1960-2016**



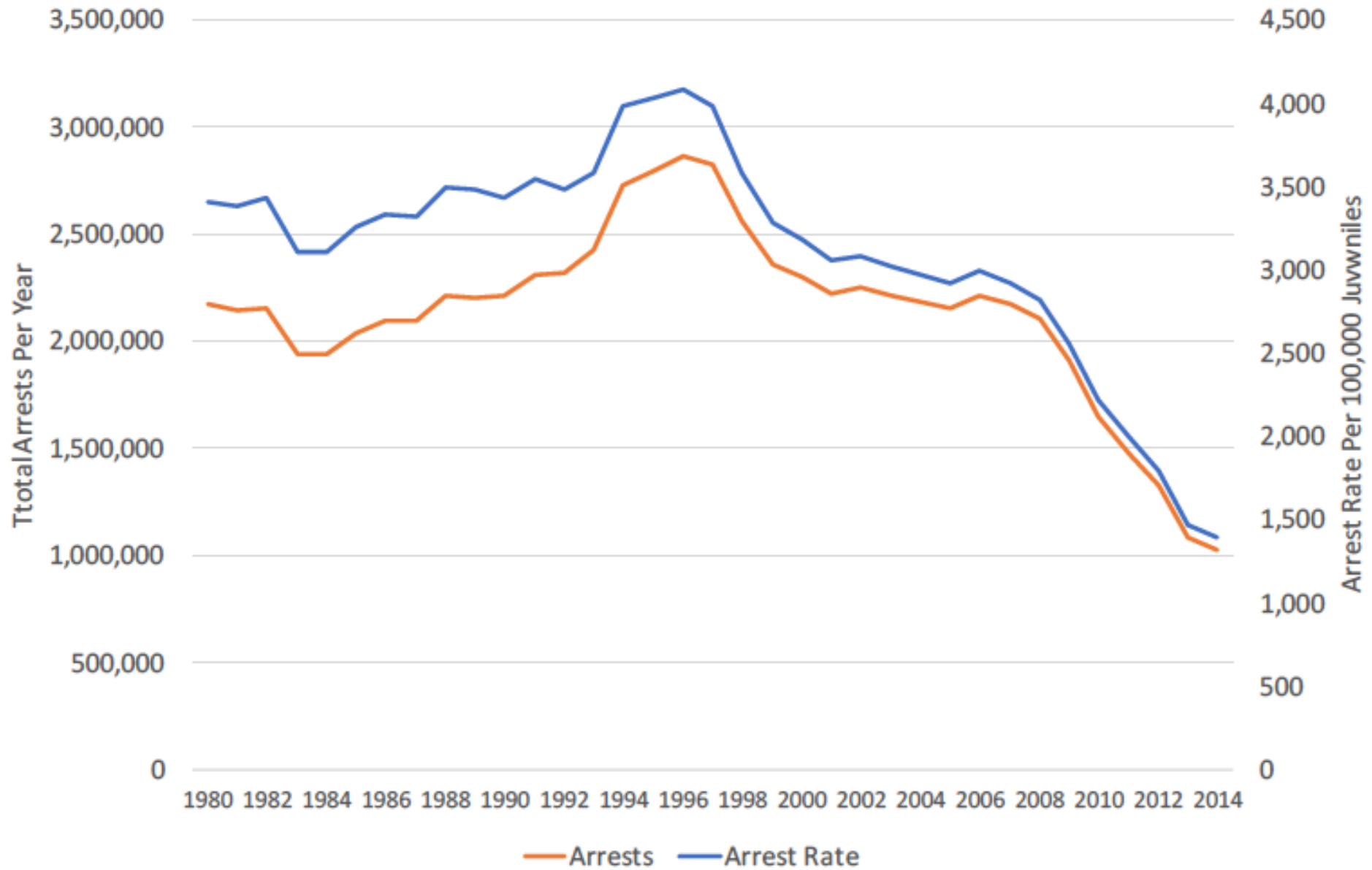
**Figure 5. 20 Year Lagged Teenage Births and Crime Rates
1960-2016**



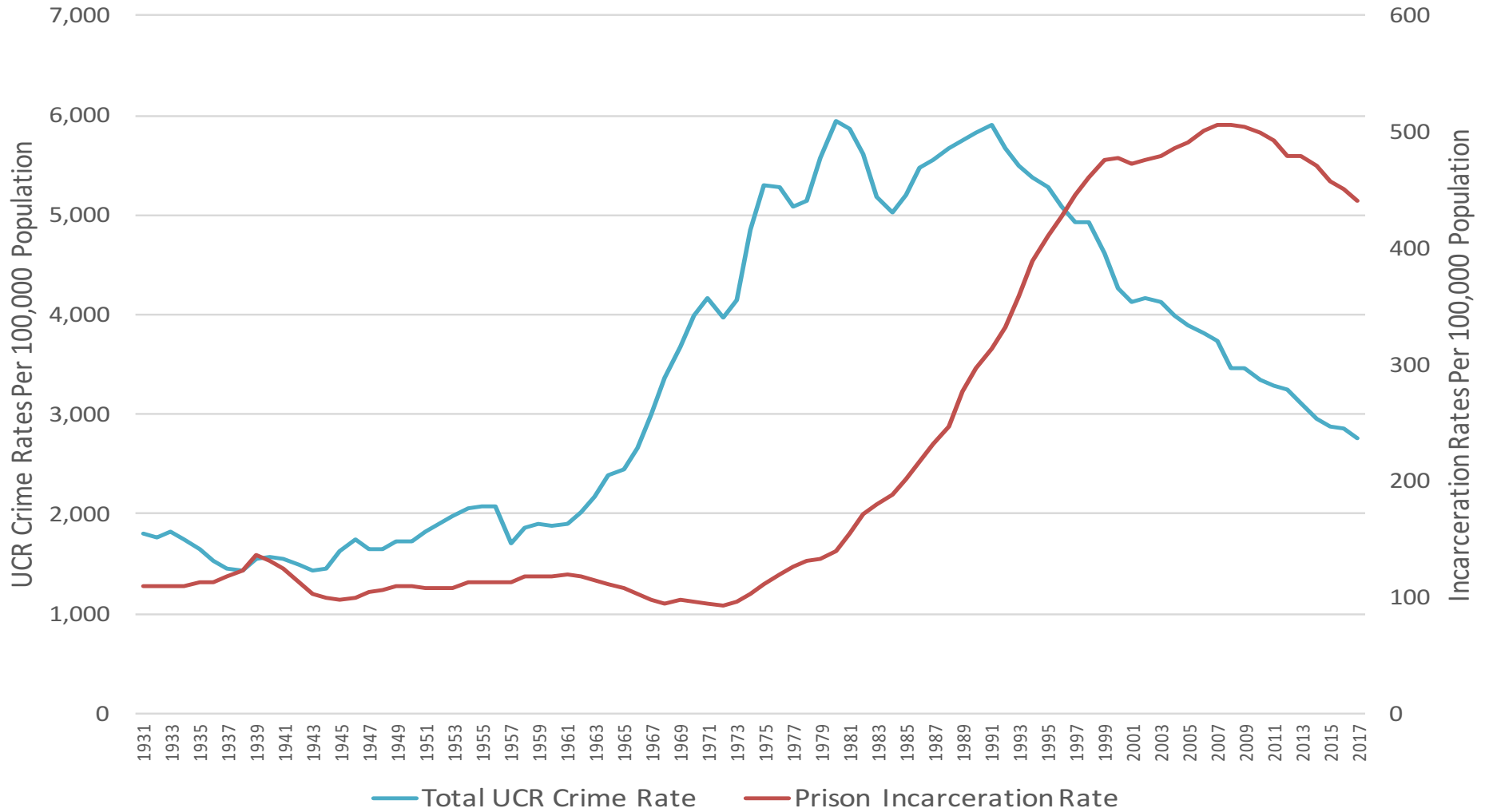
**Figure 7. Inflation, Long-Term Interest , and UCR Crime Rates
1953-2016**



**Figure 9. U.S. Juvenile Arrests
1980-2015**



**Figure 8. Crime and Incarceration Rates
1931-2017**

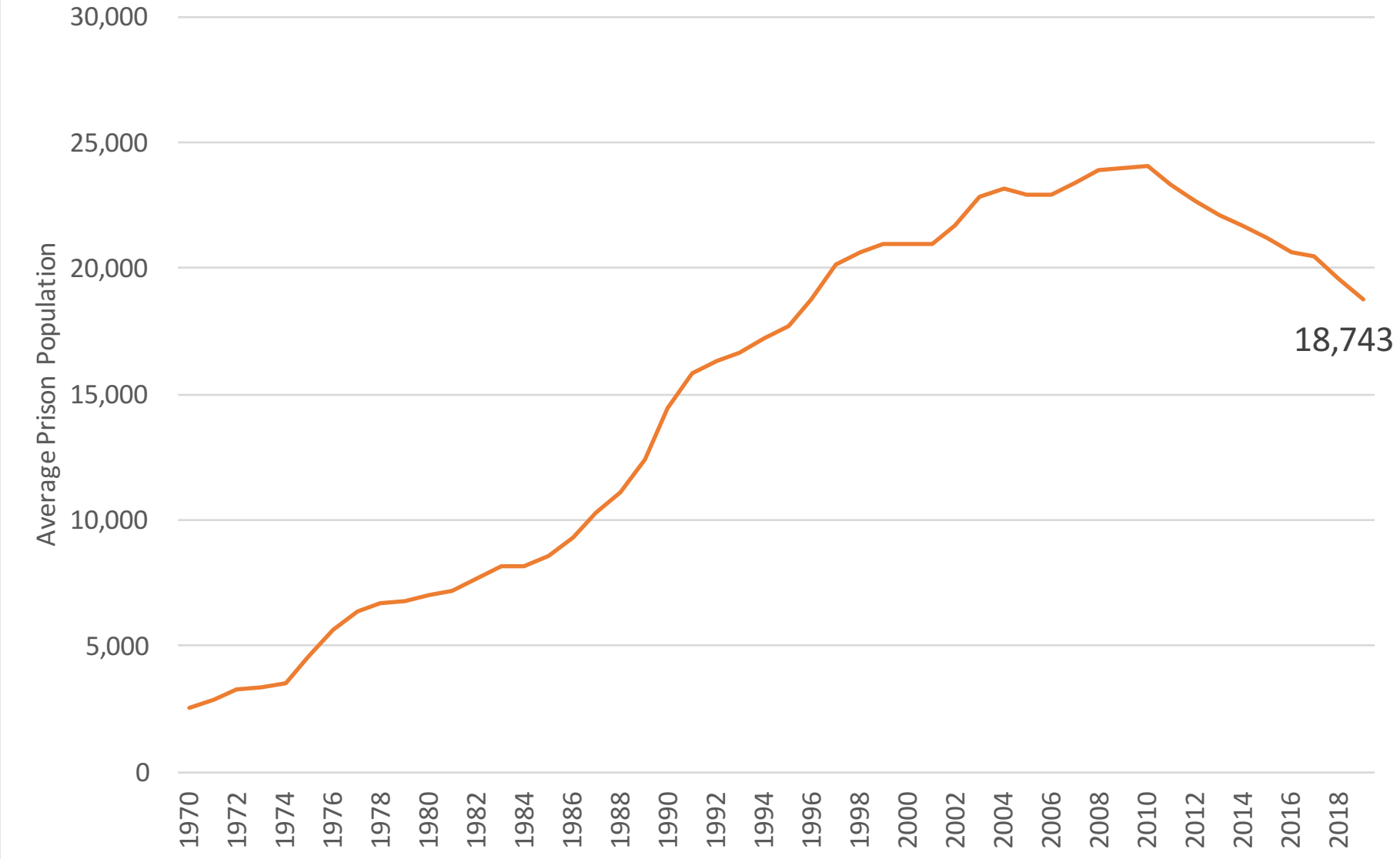


Changes in Prison and Crime Rates in 4 States

	NY	CA	NJ	MD
Year Reforms Initiated	1999	2006	1999	2008
Prison Population Before Reform	72,899	175,512	31,493	23,239
2017 Prison Population	49,461	131,039	19,585	19,367
Prison Reduction	-23,438	-44,473	-11,908	-3,872
% Reduction	-32%	-25%	-38%	-17%
UCR Crime Rate Before Reform	3,279	3,743	3,400	4,126
2017 Crime Rate	1,871	2,946	1,785	2,722
Crime Rate Reduction	-1,408	-797	-1,615	1,404
% Reduction	-43%	-21%	-48%	-34%

Sources: Bureau of Justice Statistics, Prisoners Series and UCR Crime in the United States series.

South Carolina Prison Population 1970-2019



	South Carolina	US
Crime Rate	3,506	2,569
Violence	488	369
People in Prison	18,743	1,273,605
Incarceration Rate	386	390
Black Rate	1,191	1,549
White Rate	259	272
Hispanic Rate	182	843

Going Forward

- Implement New Inmate Classification System
- Divert Technical Violators and People Sentenced to Less Than 1 Year
- Implement Incentive Based Program
 - Needs and Risk Assessment Completed at Admission
 - Case Plan Developed
 - Presumptive Parole at First Hearing
- Reform Victim Compensation
 - Victims are fully compensated at Sentencing
- Reforms will safely lower prison population to 15,000